

Azalea Minor[®]

DESIGNED FOR SMALL ADULTS
AND TEENAGERS



The Rea Azalea Minor is designed for users that require a seat with a smaller depth and width. Adapted from the Rea Azalea, the Azalea Minor boasts all the advantages of a reliable, tilt-able wheelchair with its special weight-shifting mechanism. This model is ideal for all users that require a solid, stable wheelchair.



Yes, you can.[®]



Rea Azalea Minor



Rea Azalea compatibility continues

The Rea Azalea Minor is designed for users that need a smaller-sized seat, such as petite adults or teenagers. Key features of Azalea Minor is the 'Tilt in Space' weight-shifting mechanism, to ensure a stable tilt and makes maneuvering easier. The width and depth of the Azalea Minor can be adjusted to suit individual user needs.

Tension adjustable backrest

The tension adjustable backrest offers individual shaping with the choice of backrest cushions or lateral cover.



◀ Tension adjustable backrest

Adjustable in height and width.



◀ Table tray

It is transparent and the rail offers gripping opportunities for posture solutions.



◀ Shorter Chair

The chassis is 30 mm shorter, the seat depth is 50 mm shorter and the backrest 100 mm lower than on standard models.

Tech Specs

Seat width 34-44cm	Seat depth 38 - 45cm	Seat height 40/45cm	Backrest height 55-65cm	Armrest height 24-36cm	Footrest length 33 - 62.7cm	Seat Angle +1 -25°	Backrest Angle 0-30°
Total width seat width + 22cm (seat width + 23cm)	Total height 90-125cm	Total length 90-97cm (inc footrests)	Total weight 32kg	Max. user weight 75kg	Transport weight 14.5kg ¹	Crash Tesst Approved ISO 7176-19	Max. safe slope 7°

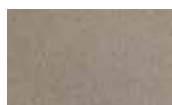
Frame Colour



Pearl Grey



Azurite Blue



Sand



Happy Red



Electric Green



¹ Transport weight increases with 4,2 Kg when Power tilt & Recline option is used.

Rea, Rea design and DSS (Dual Stability System) design are registered trademarks of Invacare International. The Rea Azalea is designed with DSS (Dual Stability system). It provides the user with enhanced stability and safety when being tilted or the backrest is reclined.

FOR FURTHER INFORMATION:

New Zealand: Freephone 0800 468 222, email sales@invacare.co.nz or visit www.invacare.co.nz

Australia: Freephone 1800 460 460, email orders@invacare.com.au or visit www.invacare.com.au

Asia: Phone +61 2 8839 5330, email anzexportsales@invacare.com or visit www.invacare.com

Thailand: Phone +66 0 2821 5515 or visit www.invacare.com



Yes, you can.®