

# Azalea Max<sup>®</sup>

A TAILOR-MADE SOLUTION FOR PLUS SIZE USERS



The Rea Azalea Max is designed to meet the specific needs of plus size users. The Rea Azalea Max is a niche product and compliments the existing Azalea family from Invacare.



Yes, you can.<sup>®</sup>



# Rea Azalea Max



## Compatibility

The Rea Azalea Max includes features such as tilt-in-space with weight-shifting and DSS (Dual Stability System) mechanism from the Azalea range. Stability in this wheelchair originates from body length compensation in the back and leg rests, beneficial for users with limited movement and that have difficulty changing position.

## High ergonomic push handle

The ergonomically shaped push handles are positioned to optimise the pushing for the carer. An alternate version with higher handles offers a different position for the hands and is optional.

## Tech Specs

	Seat width	Seat depth	Seat height	Backrest height	Armrest height	Footrest length	Seat Angle	Backrest Angle
<b>Self-Propel</b>	55,61 +5cm	53-60cm	40/45cm	50 +8 cm	32-42cm	33 - 62.7cm	1 -20°	0-30°
<b>Transit</b>	55,61 +10cm	53-60cm	40/45cm	50 +8 cm	32-42cm	33 - 62.7cm	1 -20°	0-30°

	Total width	Total height	Total length (inc footrests)	Total weight	Max. user weight	Transport weight	Max. safe slope
<b>Self-Propel</b>	seat width + 25cm	102-124cm	105-113.5cm	54kg	180kg	33kg <sup>1</sup>	7°
<b>Transit</b>	seat width + 22cm	102-124cm	105-113.5cm	54kg	180kg	33kg <sup>1</sup>	7°

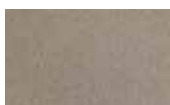
## Frame Colour



Pearl Grey



Azurite Blue



Sand



Happy Red



Electric Green



<sup>1</sup> Transport weight increases with 4,2 Kg when Power tilt & Recline option is used.

Rea, Rea design and DSS (Dual Stability System) design are registered trademarks of Invacare International. The Rea Azalea is designed with DSS (Dual Stability system). It provides the user with enhanced stability and safety when being tilted or the backrest is reclined.

### FOR FURTHER INFORMATION:

**New Zealand:** Freephone 0800 468 222, email [sales@invacare.co.nz](mailto:sales@invacare.co.nz) or visit [www.invacare.co.nz](http://www.invacare.co.nz)  
**Australia:** Freephone 1800 460 460, email [orders@invacare.com.au](mailto:orders@invacare.com.au) or visit [www.invacare.com.au](http://www.invacare.com.au)  
**Asia:** Phone +61 2 8839 5330, email [anzexportsales@invacare.com](mailto:anzexportsales@invacare.com) or visit [www.invacare.com](http://www.invacare.com)  
**Thailand:** Phone +66 0 2821 5515 or visit [www.invacare.com](http://www.invacare.com)



Yes, you can.®