



User Manual

Electric Bath Lift

INDEPENDENT LIVING

KA610

Updated: August 2025



Healthcare Solutions

Users MUST read and follow the user manual to ensure all instructions are followed and not compromised. It is recommended that this user manual be kept in an easily accessible place for quick reference.

Contents

Product Specifications	1
Safety Precautions	5
Assembly Instructions	8
Operating Instructions	12
Troubleshooting	17
Maintenance Instructions	18
Spare Parts	20
Tested Against Standards	20
Warranty Information	20

Electric Bath Lift

KA610

Product Specifications

Using a bath lift can enhance safety and independence in the bathroom, allowing individuals to enjoy a bath whilst minimising assistance from others.

Description and Intended use

The K Care Electric Bath Lift (KA610) is designed to assist individuals with mobility challenges safely getting in and out of a bathtub. It benefits people who may have difficulty lowering themselves into the bathtub or rising from a seated position in the tub.

Key Features

- The bath lift is compact in design with a foldable frame that can be easily stored and transported.
- It can be positioned in any standard bathtub (non-standard or specially customised bathtubs may not be suitable).
- It can raise and lower during bathing.
- It has six suction cups on the base to secure the product.
- It is entirely powered by batteries in the handset.
- The bath lift is waterproof (except for the charger).
- The backrest can be automatically locked on the seat base when being raised, which prevents the backrest from tilting accidentally.

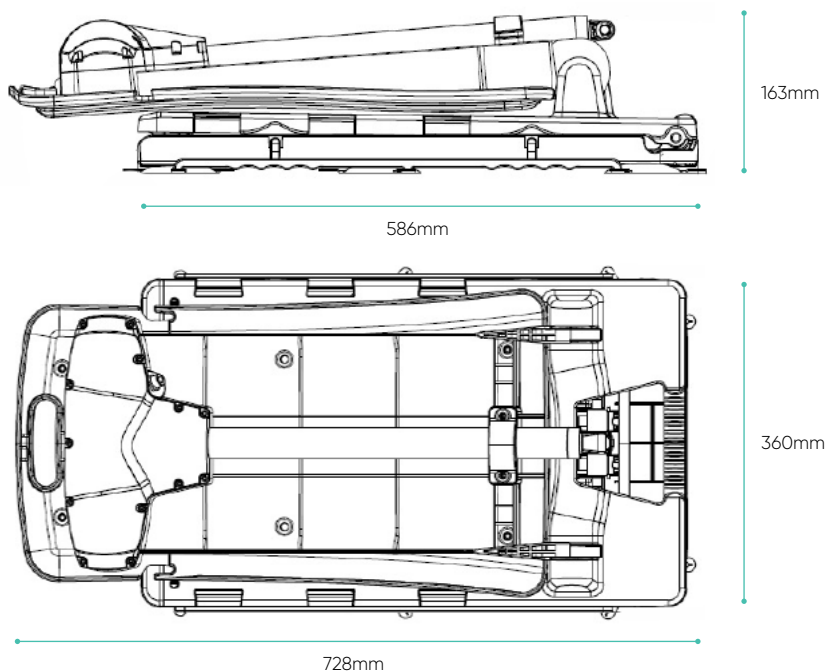
Dimensions & Weight

KA610

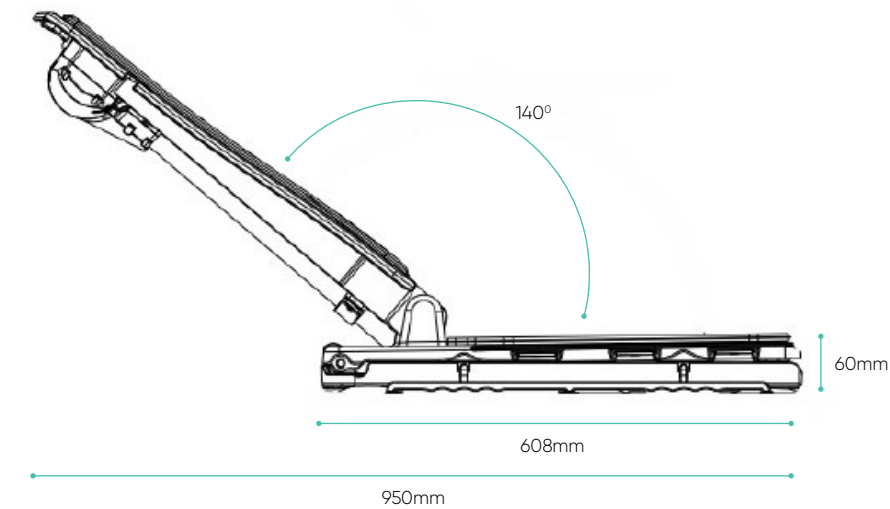
Overall Height	1071mm
Seat Height Range	60-480mm
Overall Width	360mm
Seat Width	350mm
Seat Depth	430mm
Overall Length - Folded	728mm
Overall Length - Reclined	950mm
Backrest Angle	140°
Weight Without Accessories	11kg
Max User Weight	140kg

Important: If you or someone you know is considering a bath lift, it's advisable to consult with a healthcare professional or occupational therapist to determine the most suitable option based on individual requirements.

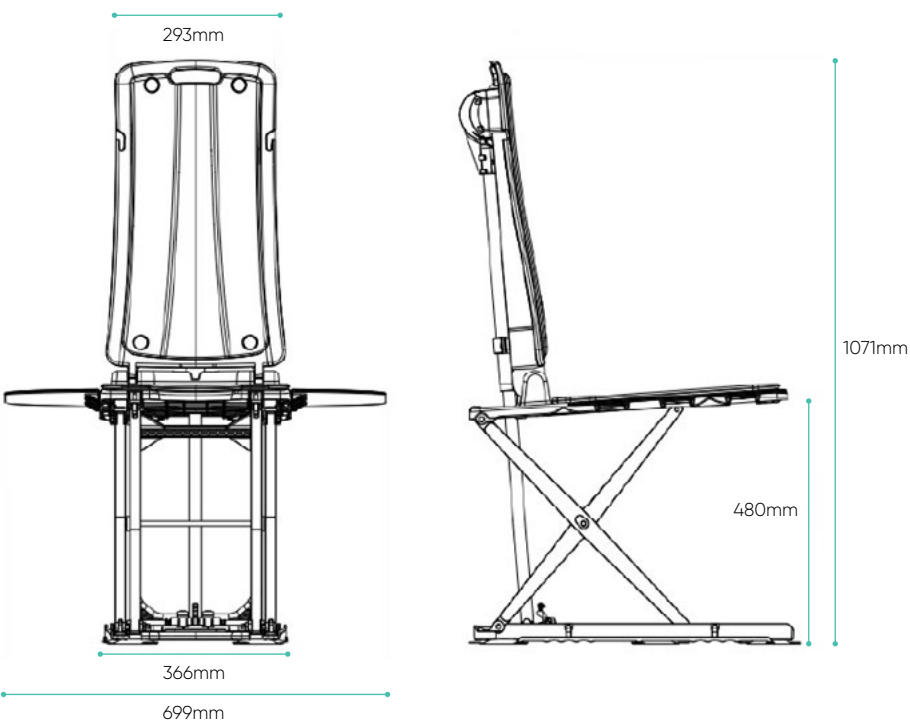
Folded position



Lowest position



Max. Extended position



Technical data environment and electrical

Operating temperature	5-40°
Operating humidity	Under 30°C 20%-90%
Operating air pressure	700-1060 hPa
Operating altitude	≤2000m
Storage temperature	-10-50°
Storage humidity	20%-90%
Storage air pressure	700-1060 hPa
Charging voltage	100-240V 50/60Hz max 0.8A
Battery pack	14.8V 2.2Ah
Protection level	IP68

Material

Backrest	PA66
Seat plate	PA66
Base frame	PA66
Blue Pad	PVC

Part list





Charger



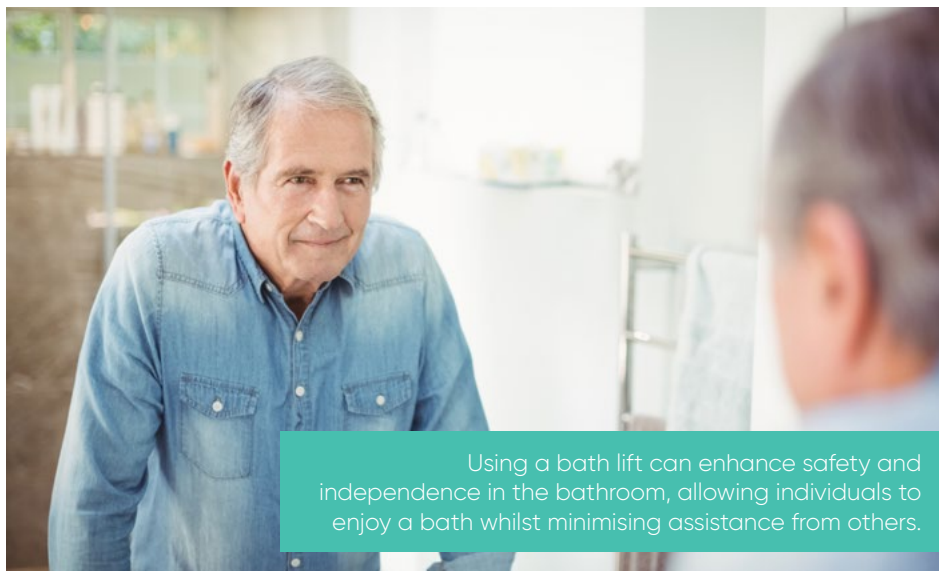
Hand control (with battery)

Safety Precautions

Indoor use only. Use the product in standard bathtub only. The product might not be suitable for non-standard or specially customised bathtubs.

Safety Warnings

- Users **MUST** read this manual carefully before first use and save for further reference.
- Close supervision is required when product is used around children, convalescents or disabled persons.
- Ensure suction cup are free from dirt, grime and foreign objects before each use.
- Conduct a trial operation before each use and verify the emergency stop button.



- Bath oils or salts can impair the performance of the lifting scissors. If using such bath additives, do not exceed the recommended dose.
- Do not drop into seat, always sit down gently to avoid damage to the chair and ensure your safety.
- Always use the supplied hand control to operate the product.
- Only use spare parts intended for this product.
- Install the bath lift according to the installation instructions.
- Do not overload. Over loading can lead to damage of the bath lift or preventing lifting.
- Do not stand or kneel on the bath lift.
- Do not sit backwards.
- Do not use on slope over 5° or surfaces with step.
- Do not use if parts are defective or missing.
- Do not use for other purposes than bathing. e.g. use it as a lifting platform.
- Do not allow children to use this product without supervision.
- Do not place objects (toothbrush, razor) near lifting scissor mechanism.
- Do not place handset near heat sources.
- Do not alter this product or its electrical components.
- Do not submerge hand control and motor in water. They are not fully waterproof.
- Always use the supplied charger and unplug when fully charged.
- Do not put hands, feet or other body parts or objects into moving parts especially the area shown in below pictures.



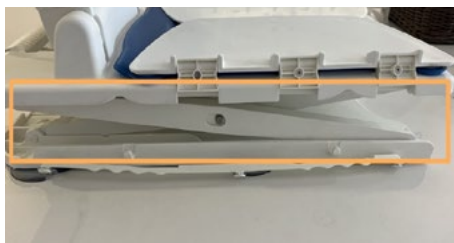
Hinge between backrest and base

Do not put hands or other objects here.



Back rest—hook of controller

For hand control only. Do not put hands or other objects here.



Base—lifting mechanism

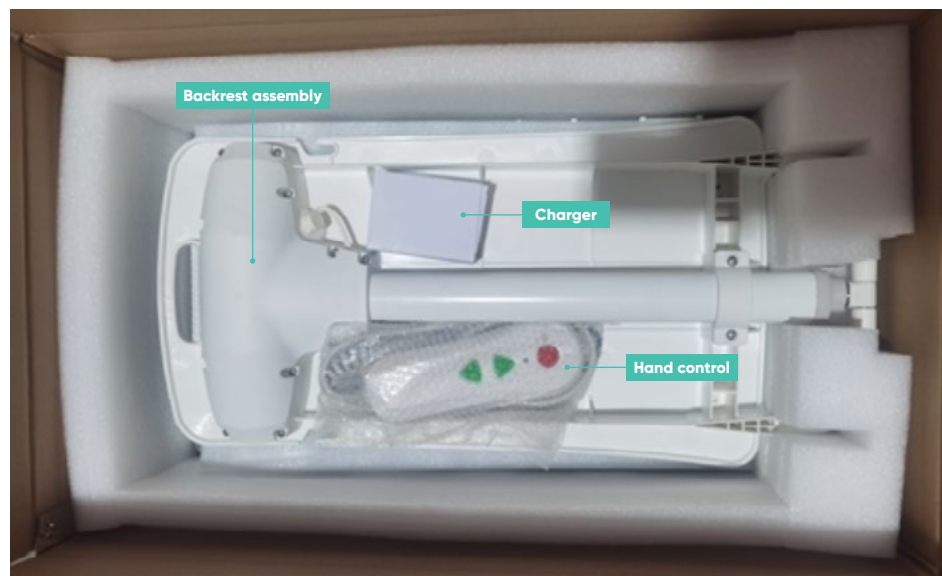
Do not put hands or other objects here.
Do not grab under the seat or between lifting scissors.

Other notes: The bath lift has passed the EMC test. However, avoid operating the bath lift when you use other electrical appliances in the bathroom e.g. a mobile phone at the same time to prevent electromagnetic interference.

Assembly Instructions

Packing list

- Hand control
- Charger
- Backrest assembly (including linear actuator and back pad)
- Seat Base assembly (Lifting scissors, seat and 6 suction cups)
- Instruction manual

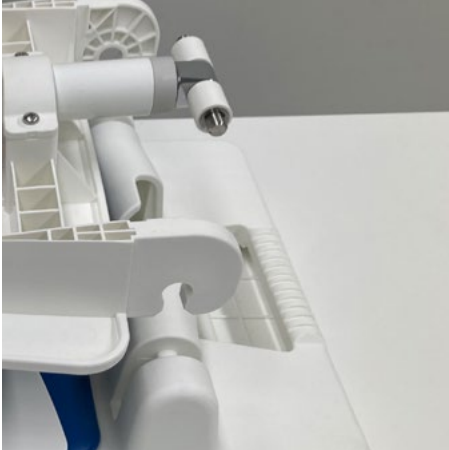


Check parts for transport damage before setting up. Contact dealer if required. It is recommended to wash the pads before first use.

Setting up bath lift

Ensure bathroom floor is dry and clean to prevent slipping before handling the bath lift. Clean bathtub and suction cups with a damp cloth before setting up.

Step 1. Install backrest to base



1. Align backrest hook with base hinge.

2. Press the hooks down on each side of the backrest to engage with base hinge.



3. Unfold backrest to check the connection. Make sure both backrest hooks engage into the seat hinges.



4. Fold backrest.

Step 2. Inspection

Check the following:

1. Suction cups are mounted properly and tightened, if required.
2. Bathtub is clear of obstacles or objects that may interfere with the bath lift.
3. Backrest will have enough space to tilt.

Step 3. Place bath lift in bathtub

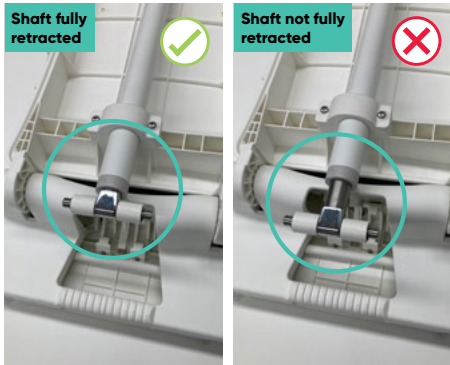
Place bath lift on the bottom of the empty bathtub. Ensure the backrest hinge is pointing to the end of the bathtub opposite the faucet and make sure suction cups hold firmly.

Warning: The bath lift can slip if the suction cups do not have a good hold.

Step 4. Connect hand control

1. Hold the backrest handle and lift the backrest until it is upright.
2. Plug hand control connector to the socket on the backrest.





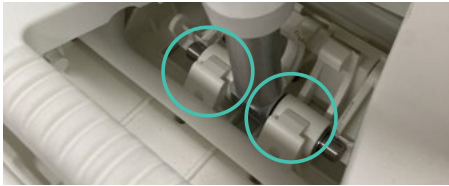
3. Press and hold the down arrow button to retract the actuator drive shaft until you hear a beep, indicating that the shaft is fully retracted.

Warning: If the shaft is not fully retracted, the end won't engage with the seat locks and may cause product damage.

4. Keep reclining the backrest to its end position.

Step 5. Raise bath lift for use

Raise the bath lift using hand control. Check the drive shaft end is engaged with base lock.



Warning: Ensure the drive shaft is engaged with the base lock before use. Failure to engage the base lock may result in injury and product damage.

Reposition bath lift

If bath lift is not positioned correctly, follow instruction below to move it forward or backward.

1. Lower the bath lift to bottom and fold the backrest.
2. Loosen the suction cups
3. Move the bath lift to desired position and repeat Step 3 to 5 to set up the bath lift.

Warning: Do not move bath lift once the bathtub has been filled with water.

Operating Instructions

Control bath lift

The bath lift is controlled by hand control. The rechargeable battery is integrated in the hand control. The hand control can only be used when the backrest is properly installed. Do not use hand control when it is charging. Do not charge hand control in bathroom.



Up button

Press and hold to raise the seat or move the backrest to upright position if bath lift in lowest tilted position. Release the button, the bath lift stops in the current position.

Down button

Press and hold to lower seat or tilt backrest to the rear after seat reaches the lowest position. Release the button, the bath lift stops in the current position.

Emergency stop button

Only press this button if the bath lift does not stop immediately when Up or Down button is released (e.g. jammed button). The bath chair can't be lowered after this button is pressed. Press Up button first to activate lowering function.

Battery indicating light

Three colors to indicate battery level.

Green light: sufficient power.

Blue light: power is insufficient, charge battery.

Red light: power is seriously low and needs to be charged immediately to prevent sudden power failure. When red light is on, you will hear beeping of the hand control if any button is pressed.

Hand control can only lower the bath lifer when power is low.

Warning: Avoid using hand control when backrest is folded.

Always retract the drive shaft to the lowest position before unfolding the backrest.

Always check the drive shaft is engaged with the base lock before use.

Bathing

1. Ensure the bath lift is properly setup as per the assembly instructions, and it is securely positioned without tipping risk.
2. Run the bath lift without load for one cycle to test the function before each use. Check the emergency stop button by holding the down button then pressing emergency button.
3. Raise the seat until it is level with the edge of the bathtub, and rest side flaps on the edge of the bathtub.
4. Fill the bath with water. Check water temperature before entering the bathtub.
5. Sit on the side flap, sliding backwards until you are sitting in the middle of the seat.
6. Lift one leg then the other over the edge of the bathtub and turn yourself into bathing position.
7. Once you are sitting correctly and comfortably, stretch your legs forward, use hand control to lower the seat into bathtub. Watch your hands and feet when the seat is lowering.
8. When seat reaches the lowest position, keep pressing Down button until the backrest reaches a desired position.
9. To get out of the tub, raise the seat to the same level of the bathtub edge and reverse the above steps 6 and 5.

Warning: Disconnect hand control from the device when it is not in use. Ensure charger and hand control connectors are entirely dry before reconnecting. Place the cap on the connector on the backrest to stop water from getting in if hand control is removed for charging.



After use and Storage

1. After bathing, drain water from bathtub.
2. Wash bath lift with water to remove foam, stains, etc. keep hand control connected when washing.
3. Lower seat to its lowest point.
4. Disconnect hand control from bath lift and wipe it clean with a dry cloth.
5. Fold seat flaps inwards. Fold the backrest. Warning: DO NOT fold backrest if water is in bathtub.
6. Lift pull cord on both sides to release suction cups, place cords on the hooks of the base.

Warning: Failing to completely lower the seat may result in product damage.



7. Remove bath lift from bathtub by holding the seat base at front and rear ends using both hands.
8. Unfold backrest and seat flaps to dry. Ensure the bath lift is dry completely before storage.

Note

When bath lift is stored at low temperature (e.g. in winter), allow it to warm up to room temperature before use.

Before reuse, clean and disinfect the product thoroughly and check the safety functions.

Warning: Do not store the product near heat sources. Avoid direct sunlight which causes material aging.

Battery charger

Note

- Battery may reach the optimal capacity after a few charging cycles.
- The indicator light of the charger is red under normal charging conditions. It turns green when battery is fully charged. It takes approximately 2.5 hours to fully charge the battery.

Warning: Always use supplied charger. Keep the charger away from water or heat when charging.

- DO NOT charge the hand control in bathroom or in other high humidity environments.
- The charger is designed for charging the hand control only. DO NOT use it for other purposes.
- The battery is built in the hand control, DO NOT disassemble the hand control.
- If signs of damage or crack displayed on housing of hand control and charger, stop using the device and contact dealer.

How to charge

1. Disconnect hand control from bath lift.
2. Ensure hand control and charger are dry.
3. Connect hand control connector to charger.
4. Plug charger into power outlet. Charging voltage range: 100–240VAC.
5. Disconnect charger from the power outlet when charging is completed.
6. Disconnect hand control connector from charger.

Important information about rechargeable lithium-ion battery

- Battery must be charged before the first use.
- Lithium-ion batteries must not exceed 30% of their nominal capacity during transport, they must be charged for at least 12 hours before first use.
- It is recommended to keep the battery level at 40~60% when it is in storage.
- If the battery is not in use for a long time, disconnect hand control from the device and store at low temperature, low humidity, dust and corrosive gas free environment to maintain the best performance.
- The following table shows the recommended storage time under the corresponding storage environment. Battery should be put into use after the storage time is exceeded.

Storage time	Storage environment
1 year	10~25°C 40~70% RH (non-condensing)
3 months	0~35°C 30~75% RH (non-condensing)
1 month	-10~50°C 20~80% RH (non-condensing)

- Battery should be charged and discharged at least once within 6 months of receipt.
- If battery is not in use for a prolonged period, it should be charged and discharged once every 6 months. This helps to maintain the service life of battery.
- Rechargeable batteries are one of the consumables that have a limited life span and continue to degrade in performance. Manufacturer offers a one-year warranty on its battery products. Normal battery wear is not included in warranty claims.

Transport

- Disconnect hand control from the device when it is being transported.
- Do not remove backrest from seat.
- Lift bath lift by holding the base frame on both sides

Troubleshooting

Issue	Possible Cause	Recommended action
Bath lift does not move. (no load) No motor noise is heard	Hand control is not connected properly	Check hand control connection. Reconnect the hand control and make sure the connector is engaged.
	Flat battery	Recharge hand control battery.
	Bad connection due to dirt	Clean connectors on backrest
	Cable is damaged	Inspect cable and contact customer service for replacement
	Actuator failure	Contact customer service
Bath lift does not move. (no load) Motor noise is heard.	Drive gear failure	Contact customer service
Bath lift can be lowered but not raised	Low battery protection is activated	Recharge battery
Bath lift is not attached on bathtub surface	Suction cups do not have a good hold. Suction cups are too old or damaged	Inspect suction cups, make sure they are fully contacted with bathtub surface Replace suction cups
Bath lift does not raise when user sits on it	It is overloaded. Control unit enters overload protection mode	Reassess user's weight. Product must not be used for user over MUW
Battery is not charging and red indicator light flashes.	Faulty electronics	Contact customer service to check the hand control
	Faulty battery	Replace hand control
	Faulty charger	Replace charger
	Battery is too hot	Avoid heat source. Let battery cool down.

Maintenance Instructions

Routine Inspections

Inspect the following before each use.

- Ensure backrest is correctly installed.
- Ensure bath lift are placed correctly in bathtub.
- Ensure suction cups have a good hold and bath lift is stable in bathtub.
- Ensure no objects are interference with lifting and backrest tilting movement.
- Check the product regularly for damage. Contact customer service if damage is observed.
- Charge and discharge battery once every 6 months if the product is not in use for a prolonged period. To discharge battery, raise and lower the bath lift 3 times without load.
- The hand control can only be opened by authorized personnel.

Cleaning

Bath lift

- Wash the bath lift with a cloth or soft brush.
- Rinse the bath lift with warm water.
- Dry the device with a cloth. Ensure it is completely dry before storage.
- The bath lift can be disinfected. Disinfect the product by wiping down all general accessible surfaces with disinfectant.
- Be careful when cleaning the base lifting scissors as they may move and cause pinch points.
- Do not use high-concentration disinfectant, harsh chemicals or solvents.
- Do not use high pressure cleaner to clean the backrest.

Hand control and charger

- Disconnect hand control from device before cleaning it and wipe hand control with damp cloth.
- Disinfect hand control with disinfectant wipes.
- Unplug charger from the power before cleaning. Wipe charger with dry cloth only.
- Do not clean the hand control and motor with detergent.
- Do not submerge the hand control and motor in water.
- Do not use a wet or damp cloth to clean charger.

Pads

- It's recommended to disinfect the contact areas every 3 months.
- Handwash pads only.

Servicing

- We recommend a 12-month preventative maintenance service on this product. Please contact our service department or your local dealer to arrange a service programme. Preventative maintenance service includes Inspection and professional cleaning of the product.

Disposal Instruction

- Please dispose of thoughtfully according to local government regulations.
- Do not dispose hand control in domestic waste as it contains lithium-ion battery.
- Do not throw the hand control in to a fire or store it near flames.
- Do not dispose rechargeable lithium-ion battery in domestic waste.

Spare Parts

- Seat pad
- Backrest pad
- Seat flaps
- Hand control
- Charger
- Suction cups

Tested Against Standards

Product specific standards

Product is tested against standard ISO 10535:2021 (Assistive products – Hoists for the transfer of persons – Requirements and test methods) for product safety.

Product is tested to electrical safety standards: IEC 60601-1(Medical electrical equipment – Part 1: General requirements for basic safety and essential performance) for electric safety.

EMC standards

Product is tested to IEC 60601-1-2 Medical electrical equipment – Part 1-2: General requirements for basic safety and essential performance – Collateral Standard: Electromagnetic disturbances – Requirements and tests.

Charger adaptor

The charger is tested to AS/NZS 61558.2.16: 2010 and is RCM approved.

Warranty Information

Warranty for this product falls within KCare standard warranty services. Please see **www.kcare.com.au** for further warranty information.

Improving your life everyday™

At Your Service

Sales, administration
and general enquiries

National 1300 783 783

Your Customer Service Team
customerservice@kcare.com.au

kcare.com.au

Manufactured by: K Care Healthcare Solutions Pty Ltd

Address: 836A Fifteenth Street, Mildura , VIC 3501, Australia

All information is considered to be true and correct at the date of publication. Changes in circumstances after the time of publication may impact on the accuracy of the information.

