

OSKA™ Aria³
Series4-V3
Brochure



CHANGING LIVES



MISSION:
CHANGING LIVES



GOAL 1

ELIMINATE AVOIDABLE PRESSURE DAMAGE



GOAL 2

IMPROVE QUALITY OF LIFE



GOAL 3

REDUCE COSTS AND LITIGATION RISK

OSKA™ Aria³ An innovative pumpless self-adjusting air mattress

Series4-V3



*when on a turning cycle or the wound is on the heel which is 100% elevated

Prevention:	Very High Risk
Treatment:	Category 3
Comfort:	
Type:	Replacement

Features

- Fire evacuation base
- Pumpless - High comfort
- Heel Relief slope
- Side Wall Support
- Welded Seams
- V-GUARD™ Technology
- *OFFLOADER™

SPECIFICATION

MAX USER WEIGHT	SIZE	BARIATRIC SIZE
230kg/36st	88x200x18cm	107x200x18cm



NO POWER NEEDED



THE SOUND OF SILENCE



AVOID DISORIENTATION



LOW MAINTENANCE

Suitable as an aid in the prevention and treatment of pressure damage up to and including category 3.

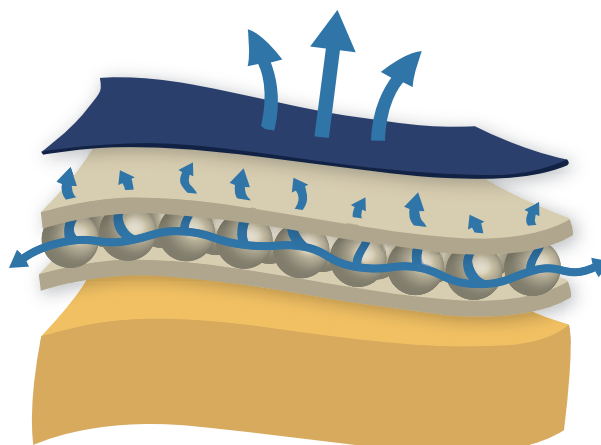
Air cells react instantly when the patient is repositioned, to equalise the pressure areas.

*The OFFLOADER™ function can be used to suspend the heel for 'zero pressure' making it suitable as an aid in the prevention and treatment of heel ulcers up to and including category 4.

Aerolite™

AEROLITE™ is a highly responsive foam with microclimate properties which allows the air to flow through the foam keeping the body cool and dry. Good microclimate management is important in preventing pressure ulcers from forming.

This foam makes up the top pressure relieving layer and OFFLOADER™ feature.





OFFLOADER™

The OFFLOADER™ function can be used to suspend the heel for 'zero pressure' making it suitable as an aid in the prevention and treatment of heel ulcers up to and including category 4.



HEEL RELIEF SLOPE

The mattress is crated with a decline at the foot end. This assists in the prevention of pressure ulcers in one of the most vulnerable areas on the body.

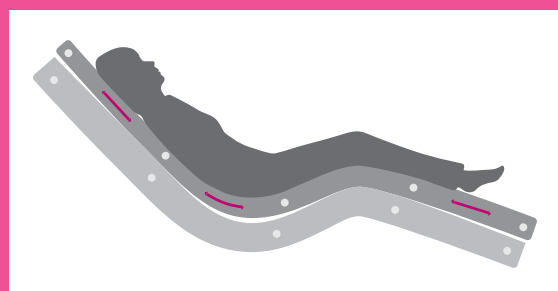


FIRE EVACUATION BASE

In the event of a fire, use the mattress to help evacuate your patient with our unique and innovative evacuation system. Simply pull out the straps and secure your patient to the mattress using the velcro fasteners. Handles are located on the end of the mattress to allow you to move your patient safely.

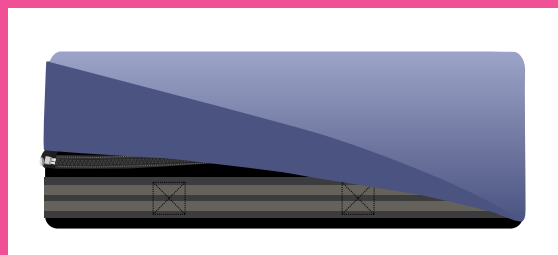
ANTI-SHEAR

Designed to significantly reduce shear and friction which often leads to tissue damage. The base foam remains in position on the bed frame, whilst the top moves with the user.



WATERFALL FLAP

It is concealed by fluid resistant extra long waterfall flap and when opened, gives access to confirm that fluids have not permeated the cover and damaged the foam. Inspection control is maintained for handles.



The Ultimate Mattress Covers



PRESSURE RELIEF

V-Guard Technology mattress covers are designed to significantly reduce pressure ulcers. Our formulations reduce friction and help disperse moisture, both of which are major contributing factors to the formation of pressure ulcers.



PATIENT COMFORT AND DURABILITY

V-GUARD Technology mattress covers are designed to provide comfort

- ⓪ Multi stretch:
- ⓪ Breathable: The moisture vapour transfer or “breathability” properties of V-Guard Technology help improve patient comfort.
- ⓪ Offers exceptional durability without compromising comfort.



INFECTION CONTROL AND CLEANING REGIME

V-GUARD Technology mattress covers incorporate infection control and anti-decubitus characteristics. Our mattress covers provide an impenetrable barrier to viruses and bacteria. To clean, wipe down with warm water and mild detergent. If required cover can be machine wash <95°C. Cleaned with chlorine based chemical <10,000 ppm concentration.



LEGISLATION

V-Guard Technology mattress covers meet the latest legislative requirements including:

- ⓪ DecaBDE and Halogen free
- ⓪ Reach and ROHS compliant
- ⓪ Biocidal Products Regulation compliant
- ⓪ Flame retardent cover



TECHNICAL SPECIFICATION SUMMARY

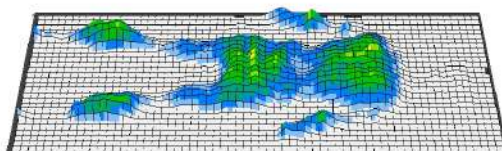
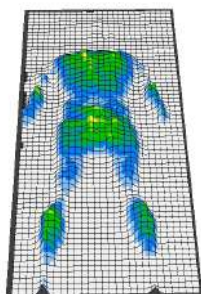
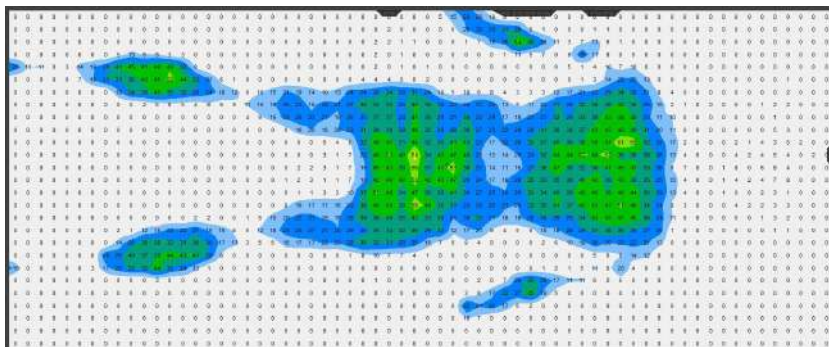
V-Guard Technology mattress covers boast an outstanding collection of technical properties that have been developed to make them the ultimate mattress covers for your organisation:

- | | |
|--|--|
| ⓪ Hydrolysis resistance >1 year | ⓪ Washable to 95°C |
| ⓪ Excellent resistance to active chlorine | ⓪ Antibacterial and Antifungal treated |
| ⓪ Anti-decubitus | ⓪ HF Weldable |
| ⓪ FR to BS7175 Crib 5 / Crib 7 variant available | ⓪ MVP (moisture vapour permeability) |
| ⓪ Autoclave resistant | ⓪ WPR >5m (water penetration resistance) |
| ⓪ Dry cleanable | |

Pressure Maps

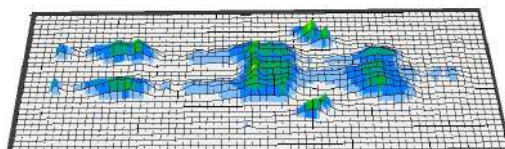
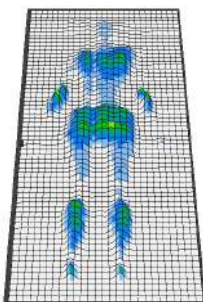
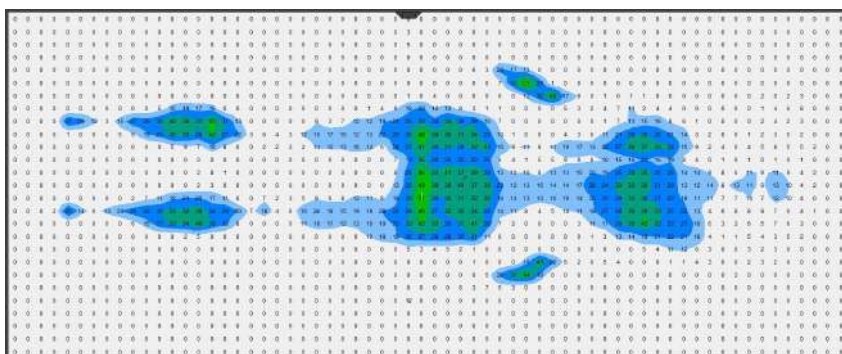
Oska Aria³

MALE | 90kg 185cm | Average Pressure 8.32 mmHg



Oska Aria³

FEMALE | 55kg 165cm | Average Pressure 4.29 mmHg



With no clear algorithm or selection guide it can be difficult to know what mattress you should be selecting for your patients.

Although the European Pressure Ulcer Panel (EPUAP 2014) gives an overview which is currently followed in clinical practice, for up to a Category 2 pressure ulcer when the client is able to reposition, or an air mattress is contraindicated, a non pumped system may be used.

For those with deep tissue injury, or category 3 or 4, a pumped system should be considered to support the underlying circulation and intermittent offloading of the bony prominences between turns.

To make this clear OSKA have devised a system, the OSKA SELECTOR™, to help carers identify if the patient is on the correct mattress.

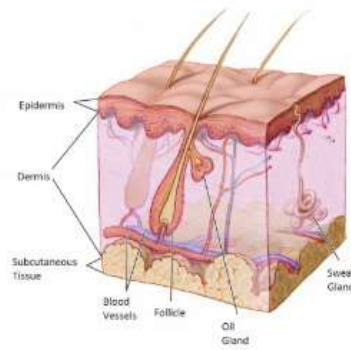
Where assessment and reassessments of risk for patients must be done holistically by a clinician, the dot system aims to serve as a guide or prompt.

Please note that no support surface can replace turns or repositioning which are still mandatory for those at risk as per the NICE guidelines (NICE 2015).

Categorization of pressure ulcers



Healthy Skin



**Superficial
Category 1-2**

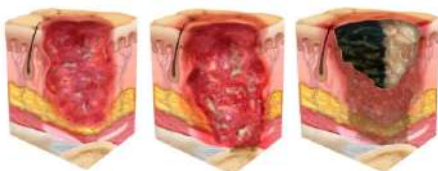


- Intact skin with non-blanchable redness of a localized area usually over a bony prominence. Other signs of the area such as discoloration, oedema, warmer or cooler as compared to adjacent tissue may also indicate pressure injury. (Category 1 may be difficult to detect in individuals with dark skin tones. May indicate “at risk” persons.)

- Damage to the epidermis and/or dermis. The ulcer is superficial and may be visible as a blister on or an abrasion of the skin.



**Deep /
Unstageable
Category 3-4**



- Involves damage to the full thickness of the skin and includes injury to, or necrosis of, the subcutaneous tissue layer, and may extend down to but not through the underlying fascia.

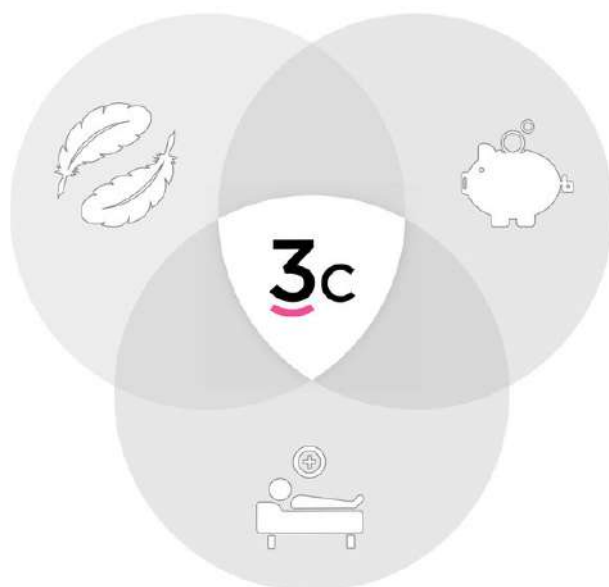
- Deep tissue damage, necrosis or damage to the muscle, bone or connective tissue with wound cavitations.

- Full thickness skin and tissue loss in which the extent of tissue damage within the ulcer cannot be confirmed because it is obscured by slough or eschar. If slough or eschar is removed, a Stage 3 or Stage 4 pressure injury will be revealed.

THE 3c CONCEPT

We deliver specialist care products that enable healthcare professionals to make a difference. OSKA are continually developing pressure care products that meet the criteria of being clinically beneficial to patients, comfortable and affordable.

You know that every patients need is different, and so do we. That's why our 3c solution helps us to help you deliver the highest standard of care possible.



Flat pack option also available



CLINICAL

Outstanding performance
Prevention is better than cure
Focus on shear and pressure reduction



COMFORT

Ideal for palliative and dementia care
Holistic care
Eliminate non-compliance



COST

Reduce use of expensive air mattresses
Reduce electricity, servicing
and repair costs
Reduce risk of litigation costs



OSKA™

1-3 College Hill
London EC4R 2RA

Australia wide
1300 370 370

in  

OSKA™ ARIA³

SERIES4-V3 USER INSTRUCTIONS





CHANGING LIVES™

CONTENTS

Know your symbols.....	4
Warning.....	5
About your mattress.....	6
How to set up your mattress.....	6
Evacuation base.....	7
Cleaning.....	8
General information.....	10
Warranty.....	10
Troubleshooting guide.....	11
Spare parts.....	11
Sizes.....	11

PLEASE READ THE FOLLOWING INSTRUCTIONS CAREFULLY AND OBSERVE THE WARNING INSTRUCTIONS BEFORE USING THE SYSTEM.

KNOW YOUR SYMBOLS

	WARNING or CAUTION	IP __	Ingress protection rating
	WARNING: Situations or actions that may have an effect on patient or user safety. Ignoring a warning could cause patient or user injury.		Authorized EC Representative
	CAUTION: Points out special procedures or precautions that persons must obey to avoid equipment damage.		Machine wash at 95
	Manufacturer		Drip dry
	Follow Instructions for Use		<1% Chlorine
	Foot end		Do not iron
	Group of function		Tumble dry
	Separate Collection (used in accordance with Waste Electrical and Electronic Equipment Act)		Do not dry clean
	Type BF applied part		Class II equipment (Double insulated)
	CE marked		Resistant to ignition
	Catalogue number		Wipe down
	Serial number		V-GUARD™ Technology
	Temperature range		Recycling



WARNING!

Only to be used for its intended purpose as described in this manual. Never attempt to repair the system yourself.

DO NOT use parts or individual components of other systems or products other than those described in this manual, or other documentation from OSKA™, to repair this mattress.

Avoid using multiple V-GUARD™ covers simultaneously.

DO NOT USE in close proximity with fire sources/hot surfaces. These include fire, burning cigarettes or hot lamps. This mattress has undergone fire testing but may still become damaged if contact with fire sources occurs.

Position the mattress correctly to prevent it becoming trapped and damaged.

NOTE: Bed rails can trap the mattress and cause damage.

Confirm that the bed frame is appropriate for use with the mattress, and that the length and width of the mattress are appropriate for the frame.

Avoid risk of suffocation from the mattress cover by positioning the patient correctly.

DO NOT puncture the mattress or mattress cover with needles or sharp instruments. This may result in loss of integrity of the mattress cover. Inspect the covers and zipper area for signs of damage, puncture, or wear that could result in fluid pass-through.

Handles included on the long side of the mattress cover should only be used for lifting and moving the mattress itself.

ABOUT YOUR MATTRESS

THE SYSTEM:

This mattress provides high user comfort without the need for an external pump or electricity by combining foam and air.

Included in the system design is a unique Heel Zone that is designed to further reduce pressure for the sensitive heel area. Also included is the OFFLOADER™ feature, designed to create a zone of zero pressure.

In order to maintain low surface pressure the special valve technology allows the internal air reservoir inside the mattress to be distributed amongst the cells by patient weight and movement.

COVER:

The Series4-V3 comes with a V-GUARD™ cover which provide an impenetrable barrier to viruses and bacteria. The cover has welded seams that are ingress proof, minimising any risk of harbouring viruses or bacteria and transmitting infections.

The cover includes a fire evacuation base which means handles can be easily accessed in case of emergency and used for moving and transporting.

An additional inner cover protects the foam and cells.

RECOMMENDATIONS:

OSKA™ Series4-V3 self adjusting replacement pressure system is recommended to be used as an aid in the prevention and treatment of pressure ulcers up-to and including category 3. The OFFLOADER™ feature can be used as an aid to create a zone of zero pressure to help prevent and treat pressure ulcers up to and including category 4.

CAPACITY:

OSKA™ Series4-V3 is recommended for patient weight up to 230kg. Heavier patients are better accommodated with a more appropriate OSKA™ pressure system.

The fire evacuation base included within the cover can be used for patients weighing up to 130kg.

You must not lift the mattress whilst a patient is lying on it or use it to transport a patient unless in an evacuation.

HOW TO SET UP YOUR MATTRESS

UNPACKING THE MATTRESS

Please ensure the box is not damaged upon arrival. Avoid using a knife when opening the box and any other protective material as this could damage the mattress and/or cover.

Place the Series4-V3 onto the bed frame and adjust the cover if needed. The mattress has a black side that should be down on the bed frame, and a blue fabric side that should face up towards the patient.

Confirm that the bed frame is appropriate for use with the mattress, and that the length and width of the mattress are appropriate for the frame.

Place directly on a healthcare bedframe only, never on top of another mattress.

Leave for a few minutes before using.

HAND CHECK

The hand check should be conducted regularly to check the mattress is functioning correctly.

With the cover open, using a vertical hand, insert your hand between the air and cells directly underneath the patient's sacrum. The correct clearance between the mattress base and patient is 2-3 fingers. Check the cells and tubing if this is not the case. If problem persists please contact OSKA™.

EVACUATION BASE

The series4-V3 comes with evacuation straps within it's base.

It is very important that the safety equipment, as well as the evacuation procedures, are well planned and known in advance.

These covers can significantly help you be prepared in the case of a fire or other emergency when a less mobile patient will need to be evacuated.

Handles appear on all 4 sides of the cover and the velcro fire evacuation straps are housed securely in pockets on the 2 longer sides with their ends sticking out for easy access. These straps are used in the case of an emergency to secure the patient to the mattress before transporting them to safe area.



WARNING!

It is imperative that anyone performing an evacuation must have acquired the necessary training. Before commencing any evacuation always check the equipment, cover and mattress to ensure the evacuation can be carried out safely.

Ensuring the mattress is safe to use for evacuation is the user's responsibility.

EVACUATION INSTRUCTIONS

- Let the patient know what is about to happen.
- Lower and lock the bed in position.
- Disconnect the tubes from the pump.
- Pull the velcro evacuation straps out of the base and fasten.
- Using the outer handles at the foot end of the mattress, turn it outwards from the bed.
- Carefully drag the mattress and patient down on to the floor.
- Use the outer handles at the foot end of the mattress. The working position should be a little bit leaning back.

DOWN THE STAIRS

- Walking backwards, continue until the main part of the mattress slides pass the top stair.
- Turn your back towards the patient and look in the direction you are moving.
- Holding one hand on the stair rail and the other hand on the middle handle of the mattress, begin to pull.
- Walk down the stairs maintaining speed, without running, is important.

TRAINING/PRACTISE

To bear in mind when training.

Pulling down from the bed:

- Make sure the patient in the bed is not at the very top of the mattress. If they are, it increases the risk of hitting their head on the bed when pulling down.

Pulling on the stairs:

- Practice this technique by pulling an empty mattress down the stairs.
- When training with a person on the mattress, fasten a string or rope onto the handles at the head end. This enables another person to then walk behind the mattress and help out.
- Practicing on the stairs where an evacuation may be necessary is advisable.

General:

- The purpose of the training is not to carry it out at high speed, but to grasp the correct technique.

Training covers:

- When the equipment is used to evacuate, heavy strain is put on the seams and handles. Always check the seams and handles at the end of training. It is advisable to mark any equipment used for training as "Training equipment" and use it only for this purpose.

EXPLANATIONS

- Always use the velcro straps when evacuating a patient to prevent the patient sliding/rolling down from the mattress.
- Pulling at the foot end reduces the strain on the puller, which means faster and safer evacuation is possible.
- Pulling the mattress on the stairs is the hardest part of the evacuation and should therefore be practised carefully.
- Keep the patients arms inside the velcro straps. This prevents the user grabbing hold of something out of fear.

CLEANING

V-GUARD™ CLEANING AND AFTERCARE GUIDELINES.

OSKA™ V-GUARD™ technology covers are durable but, as medical devices, they need treating with great care. The surface is vapour permeable so it is waterproof, but breathable to reduce sweating of patient. This outer barrier must not be penetrated. Even the smallest breach of this barrier will cause fluid to penetrate the mattress.

There are specific cleaning and care instructions that need to be strictly adhered to prolong the life of the product.

1. GENERAL DIRECTIVES

- 1.1 Abrasive cleaning agents should NOT be used.
- 1.2 In addition, due to the range of cleaning chemicals and conditioners being used, customers should ascertain that any fabric performs as expected, without any adverse effect.
- 1.3 Some surface wrinkling may result from cleaning procedures. This should have no adverse effect on the fabric's properties.
- 1.4 If customers have their own particular cleaning methods that must be used and that are not covered in this article, they should consult OSKA™ for further direction and guidance.

2. WASHING AND DISINFECTION

- 2.1 All polyurethane coatings need to be treated with care when cleaning the surface. Many industrial cleaning agents are extremely harsh on the coating and can cause it to break down.
- 2.2 For superficial dirt use a disposable wipe and a warm solution of neutral

detergent. Do not use abrasive cleaners.

- 2.3 Disinfect in situ using 0.1% sodium hypochlorite solution (1000ppm available chlorine). Wipe off any residue with clean water. V-GUARD™ covers can tolerate 10,000ppm chlorine but using a weaker solution of 1,000 ppm will reduce the risk of a high concentrate being left on the surface.
- 2.4 The fabrics are able to be washed in warm soap water at up to 95°C.
- 2.5 All cleaning agents and disinfectants must be thoroughly rinsed off and the item dried before storage.

3. DRYING

- 3.1 Spin and tumble dry on a low setting (not more than 130°C. The fabric surface may wrinkle but this will not impede function). The operator ensures it is removed as soon as all moisture is removed. The fabric must not be left sitting on the heated bowl of the drier when drying is complete.
- 3.2 Do not mangle.
- 3.3 Do not iron.

4. STORAGE

- 4.1 Store in a cool dry area.
- 4.2 Avoid excessive pressure and always thoroughly dry fabric before re-use or storage. Do not fold away wet or store in damp conditions.
- 4.3 Keep away from sharp objects.

5. DAMAGES AND REPLACEMENT

- 5.1 Regularly check the inside of the cover for any signs of leakage
- 5.2 If the cover leaks then the waterproof barrier has been broken and a new cover should be purchased from OSKA™.

DELAMINATION:

Delamination is when the layers within the structure of the mattress cover separate. This can be caused by using incorrect chemicals or too high a concentrate of cleaning chemicals on the surface.

HOW TO PREVENT DELAMINATION:

OSKA™ V-GUARD™ Technology covers incorporate a special layering system to make them much more resistant to delamination than many other mattress covers. However, to help prevent delamination:

1. Always abide by the cleaning instructions
2. Avoid using chemicals with too high concentration.
3. Ensure cleaning chemicals are always thoroughly rinsed off before allowing to dry
4. The V-GUARD™ covers can tolerate up to 10,000ppm chlorine but using a weaker solution of 1,000ppm will reduce the risk of a high concentrate being left on the surface
5. Ensure the covers are thoroughly dry before using or storing the mattress

STRIKETHROUGH:

Strikethrough occurs when the fibres in the mattress covers start to break down. Small cracks develop, which on inspection, may not be visible. This means fluids and other contaminants can pass through the cover and contaminate the core of the mattress.

HOW TO PREVENT STRIKETHROUGH:

Covers are most susceptible to strikethrough damage when they are wet. During cleaning, extra care should be taken to avoid abrasion of the surface. OSKA™ V-GUARD™ Technology covers incorporate a special

layering system to make them much more durable than many other mattress covers. However, to help prevent strikethrough:

1. Always abide by the cleaning instructions
2. Avoid using chemicals with too high concentration.
3. Ensure cleaning chemicals are always thoroughly rinsed off before allowing to dry
4. The V-GUARD™ covers can tolerate up to 10,000ppm chlorine but using a weaker solution of 1,000ppm will reduce the risk of a high concentrate being left on the surface
5. Ensure the covers are thoroughly dry before using or storing the mattress

GENERAL INFORMATION

STORAGE:

Store the mattress on a flat surface or carefully rolled/folded with the zip closed. Always store at room temperature in a dry area. Make sure the mattress is stored where it will not be exposed to thrusts, hits or other things that can damage it. Avoid direct exposure of sunlight. If the mattress is to be stored more than 3 months, we recommend it is stored on a flat surface (not folded or rolled up).

SERVICE AND REPAIRS

Only spare parts which have been approved by OSKA™ should be used. Using non-approved spare parts will invalidate the warranty.

You must submit a warranty claim to OSKA™ before the product is returned.

If you have questions regarding warranty and service please contact OSKA™.

WARRANTY

The warranty is based on statutory regulations. The warranty does not apply if the goods supplied by OSKA™ are processed, handled or modified by other parties without prior consent from OSKA™ or if these operating instructions are not followed.

For medical devices as understood by the EU - Directive 93/94, whose usage (also operations) is subject to regular service and maintenance, a warranty can be offered only if the service intervals prescribed by OSKA™ are adhered to.

If during inspection it is found that damages are due to wear and tear or are not subject to warranty, then OSKA™ are empowered to claim the expenses (inspection, transport costs etc) from the client. The use of parts or individual components of other systems or products or combinations thereof are not permissible.

Warranty claims become invalid should any damage result from this kind of conduct and therefore remain the responsibility of the user/owner.

TROUBLESHOOTING GUIDE:

Problem	Solution
The patient is bottoming out	Open covers and check cells and tubing Check again through Hand Check (See page 7)

SPARE PARTS

Spare parts	Code
Spare top cover 88 x 200cm	WP01-839
Spare bottom cover 88 x 200cm	WP01-838
Spare top foam comfort cartridge 88 x 200cm	WP01-029

SIZES:

DIMENSION WxLxH:
88x200x18cm / 120x200x18cm

CRIB 5 FIRE RATING





OSKA™

1-3 College Hill
London EC4R 2RA

2 Selgar Ave,
Clovelly Park SA, 5042

