

SIRIUS ADJUSTABLE BED

Style meets
FUNCTIONALITY

PREMIUM QUALITY AUSTRALIAN DESIGN

2024 GOOD DESIGN AUSTRALIA AWARD WINNER

SIRIUS OFFERS THE ULTIMATE IN CLIENT SAFETY
AND COMFORT WITHOUT COMPROMISING ON STYLE

ELEVATION RANGE 200MM - 750MM REDUCING
RISK TO CLIENTS & ALLOWING CARE GIVERS
SAFE TRANSFERS & EASY ACCESS TO PROVIDE
TREATMENT

PRESET POSITIONS & OVER 50 POSITION
COMBINATIONS

SIRIUS IS REGISTERED ON THE AUSTRALIAN
REGISTER OF THERAPEUTIC GOODS (ARTG) AS
A CLASS I MEDICAL DEVICE (ID 416181)





Well-engineered machinery and beautiful composition, SleepTite's award winning SIRIUS adjustable bed weaves clean aesthetics together with seamless clinical functionalities. SIRIUS was designed in Australia following extensive consultation with occupational therapists, nurses, carers, aged care facility managers and end-users who desired a bed with both floorline capabilities (200mm) and an advanced height function (750mm) that didn't compromise on style. SIRIUS was designed to bring respect and dignity to the lives of those in need of assistive technology in the bedroom without compromising safety for the user or those who care for them. SIRIUS is suitable for any bedroom where assisted living solutions are required, whether that be in Home Care, Residential Aged Care, Supported Independent Living or Specialist Disability Accommodation environments.

KEY FEATURES



Commercial grade stain resistant fabric



Underbed light



Siderails & Bed Stick options



Matching companion bed available

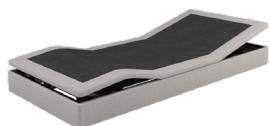


7 preset positions & 50 combinations

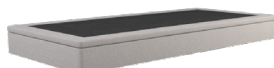


Hundreds of finishes - fabric, PU & wood available for bulk orders

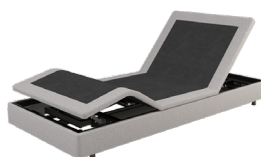
PRESET POSITIONS & MULTIPLE COMBINATIONS



Zero Gravity



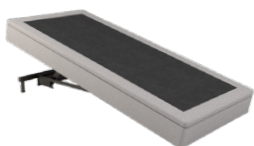
Floorline Position (200mm)



Backrest & Kneebreak in Low Position



Chair Position



Reverse Trendelenburg



High Position (750mm)



Backrest & Kneebreak in all height positions

SIRIUS offers preset positions (including 3 that can be customised to the user), 50 combinations, underbed lighting and a suite of optional extras such as bed stick with return, side rails and a matching companion bed.

SAFETY FEATURES

SIRIUS' market leading floorline and height elevation range (200mm - 750mm) offers the ultimate in user safety and comfort while providing the safest working environment for care givers.

With its impressive low height of 200mm at the top of the bed surface, injury can be significantly reduced or avoided in the event of a fall from bed, therefore limiting the need for side-rails and reducing user anxiety.

Studies have shown the benefits of sleeping low and eliminating side rails to user safety, welfare and comfort, in particular by lowering fall rates and fall injury severity.

The ability to raise the bed to 750mm (900mm when paired with a 150mm mattress) will reduce the strain of manual handling users, allowing care givers and medical staff easy access to provide treatment and enabling safe transfers.

With over 50 combinations and the ability to raise or lower the surface height to any position within the elevation range, carers and medical staff can ensure SIRIUS will sit at a safe height for whoever is sleeping on it.

Mobility challenges, dementia, vertigo, memory loss and vision impairment are common ailments that contribute to falls risk. The wide surface of the SIRIUS King Single bed reduces the risk of falls (compared with a Long Single surface) meaning users can feel more comfortable and carers will have greater piece of mind for their safety.

The ability to move SIRIUS into a low height and flat surface facilitates the administration of CPR in the event of an emergency.

Optional extras can be purchased and retrofit at any time, ensuring SIRIUS will remain a suitable option for users regardless of their care requirements.

Sleeptite successfully developed a revolutionary Hidden Castors System which allows carers to easily move the position of the bed if required. However, the casters can only be engaged via a separate button on the remote ensuring SIRIUS won't be lowered onto the casters when the carer or user is putting the bed into low position.

SIRIUS is registered on the Australian Register of Therapeutic Goods (ARTG) as a Class I Medical Device (ID 416181) and was built to all relevant ISO safety standards.



OPTIONAL EXTRAS



Matching headboard



Matching footboard



Companion Bed



Side Rails



Bed Stick with return



Standard colour: Onyx



Standard colour: Stone



150mm Leg with lockable caster

KEY SPECIFICATIONS

Australian standard bed sizes:

Long Single	920mm x 2030mm
King Single	1070mm x 2030mm
Split King	1840mm x 2030mm
Companion Bed	920mm x 2030mm

Technical Specifications:

Client Surface Long Single	920mm x 2030mm
Client Surface King Single	1070mm x 2030mm
Client Surface Height Range	200mm - 750mm
Overall Length	2030mm
Overall Width	920mm (Long Single) 1070mm (King Single)
Safe Working Load	200kg
Underbed Clearance Variable	100mm - 150mm
Knee Bend Range	0° to 38°
Backrest Range	0° to 70°
Product Weight Long Single	96kg
Product Weight King Single	106kg

Warranty:

Frame - 10 years

Motor & Electronics - 3 years

Sleeptite recent awards and recognition



Sleeptite industry association



WWW.SLEPTITE.COM.AU